



UV COATED PANELS

(HARD WOOD USED FOR MOTHERBOARDS)

TECHNICAL SPECIFICATIONS & APPLICATIONS



FOR THE 1ST TIME
IN INDIA



Some of Our Prestigious Customers

•Samsung •Tata Motors •Mercedes-Benz •China Embassy

•Wipro •Godrej •Sony Bravia •HP Computer •Mantri

Developers •Van Heusen •Madame •VIP Luggage •Lakme

•Space Wood •Raymond Showroom •Dewan Shaib Suitings

•BP ERGO •UNICOS •Featherlite Office System Pvt Ltd.

•Black Berry Clothing Store

ABOUT ACTION TESA ULTRA VIOLET (UV) COATED PANELS

Ultra Violet Coating is an Acrylic adhesive based decorative lacquer which is cured by Ultra Violet rays in a series of closed chambers. UV Coating is a very polished, lustrous coating applied to a panel surface which could be Melamine impregnated Prelam, Natural/Recon Veneered or even Metal Foiled. The process of UV drying makes the end product Emission Free. The UV lacquering is a fully automated, synchronized PLC controlled process.



ADVANTAGE

- TESA UV boards are ready to use & no further finishing is required on surface. Hence it completely eliminate the extensive labor work & thus productivity of Plant get enhance drastically.
- All TESA products are tested in-house and in certified laboratories to qualify all the tests of Gloss, Scratch, UV cure etc.
- Transparent UV lacquer renders up to 98% long-lasting glossy finish
- Extra hardened UV coated surface makes it highly resistant to scratch and abrasion.
- Ultra Violet Coating on exterior grade MDF makes it highly resistant to moisture and fungal attack.
- Fixing of UV panels paneling application can be done with normal hardware like used for prelaminated boards.
- UV panels are recommended to be used for vertical application in normal furniture applications.
- Action TESA UV Coated Panels are ideal for laser engraving and CNC routing.

ULTRA VIOLET (UV) COATED PANELS

Melamine U.V. Coated Panel: A series of 9 layers of UV coating being done on Prelaminated Boards. Decorative paper being used for the surface of boards & a special kind of Prelamination process being adopted to make boards before UV coatings.

These panels from TESA have the following advantages:

- Super smooth surface of MDF substrate
- Uniform pasting of veneer on MDF due to special pressing technology
- Solid wood like look
- As the UV coating line is fully automatic so the finish on these panels is uniform all over and gives a great finish
- 100% environment friendly
- The gloss level is more than 98% in high gloss version giving a mirror finish
- UV coated is 100% cure so no change in gloss levels with time
- Value for money product
- Ready to use product as the panel is ready to be used in the application without the efforts of doing any polish on that.

PRODUCT SPECIFICATION

ULTRA VIOLET (UV) COATED PANELS

Type of Core Panel	Available in Prelaminated MDF Exterior Grade - Type-I, Highly Water resistant
BIS License (Core Panel)	IS : 14587 (Prelaminated MDF)
Sizes Available	Prelaminated MDF : 8FT (2440 mm) x 4FT (1220MM) On specific customer demands we can further customize panel sizes in logical sizes variants.
Thickness Available	Prelaminated MDF : 18mm
Shades Available	Melamine UV boards comes in more then 55 color

APPLICATIONS

ULTRA VIOLET (UV) COATED PANELS

- Kitchens Shutter • Sliding Wardrobe
- Wall Paneling & Embellishments
- Ceiling • LCD Display Unit • Wall Cladding
- Bathroom/Washbasin Cabin Shutters
- Product Display Unit • Office Storage Unit
- Various Furniture & Fixtures
- High Gloss White Marker Board

APPLICATIONS

ULTRA VIOLET (UV)
COATED PANELS



It Can be used for Sliding Wardrobe, LCD Display Unit
& Wall Paneling

APPLICATIONS

ULTRA VIOLET (UV)
COATED PANELS



It Can be used for Kitchen Shutter, Ceiling
and Wall Cladding

APPLICATIONS

ULTRA VIOLET (UV)
COATED PANELS



Bathroom
Washbasin Cabin Shutters



CNC Routed Panel



Laser Engraving



Furniture Fixture



Actual Site Photograph

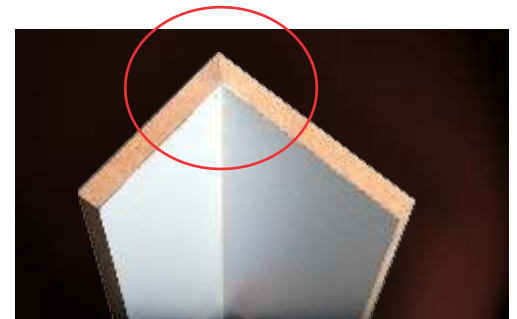
APPLICATIONS

ULTRA VIOLET (UV) COATED PANELS

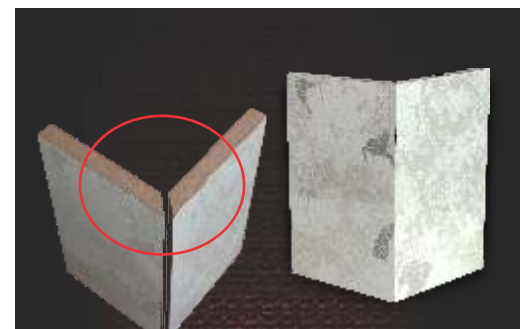
Display Unit



Actual Site Photograph



RIGHT ANGEL JOINT (Miter Joint)



RIGHT ANGEL JOINT PILLAR (Miter Joint)



Any Carpenter easily make the right angel joint (Miter Joint) with help of Router Machine, Panel Saw, Circular Saw & Hand Planer.

APPLICATIONS

ULTRA VIOLET (UV)
COATED PANELS



Actual Site Photograph

WALL PANEL

RECOMMENDED FIXING SOLUTION

TYPES OF FITTING & HARDWARE

1

KEKU FITTING



2

SPRING CLIP



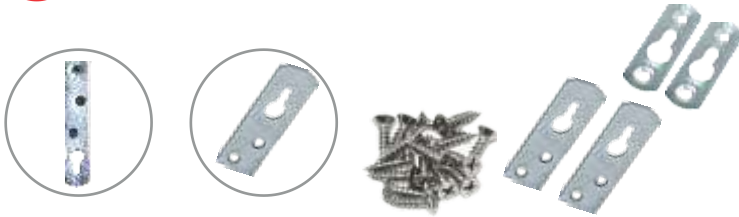
WALL PANEL

RECOMMENDED FIXING SOLUTION

TYPES OF FITTING & HARDWARE

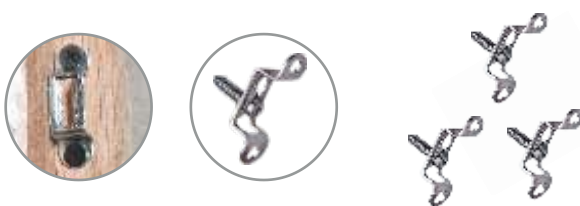
3

HANGER/HANGER PLATE



4

MODULAR CLIP



WALL PANEL

RECOMMENDED FIXING SOLUTION

TYPES OF FITTING & HARDWARE

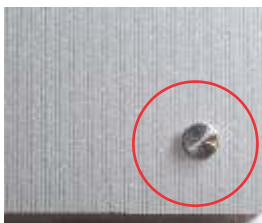
5

PUSH FIX

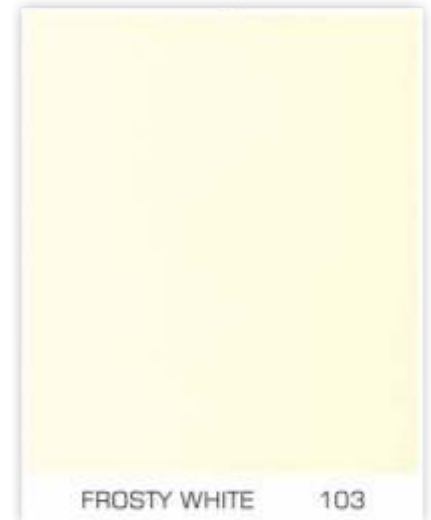
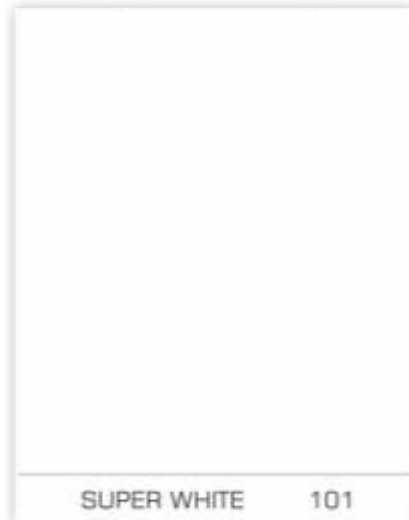
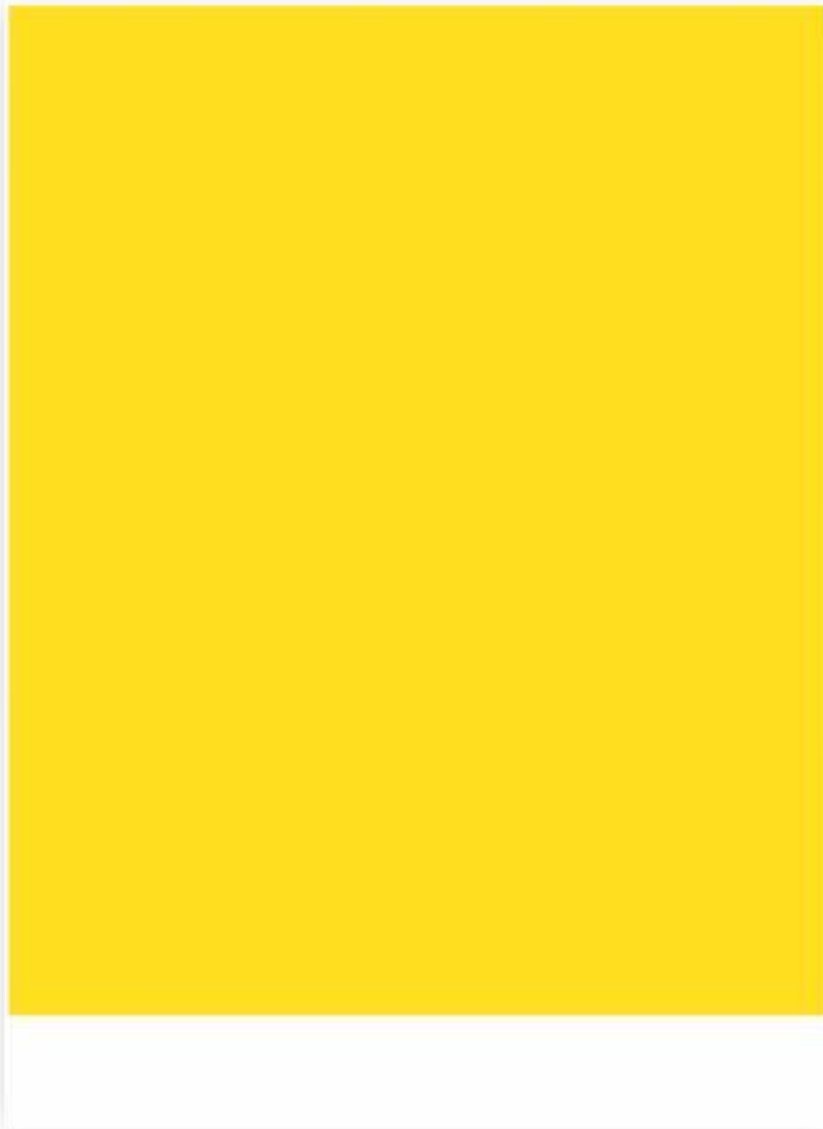


6

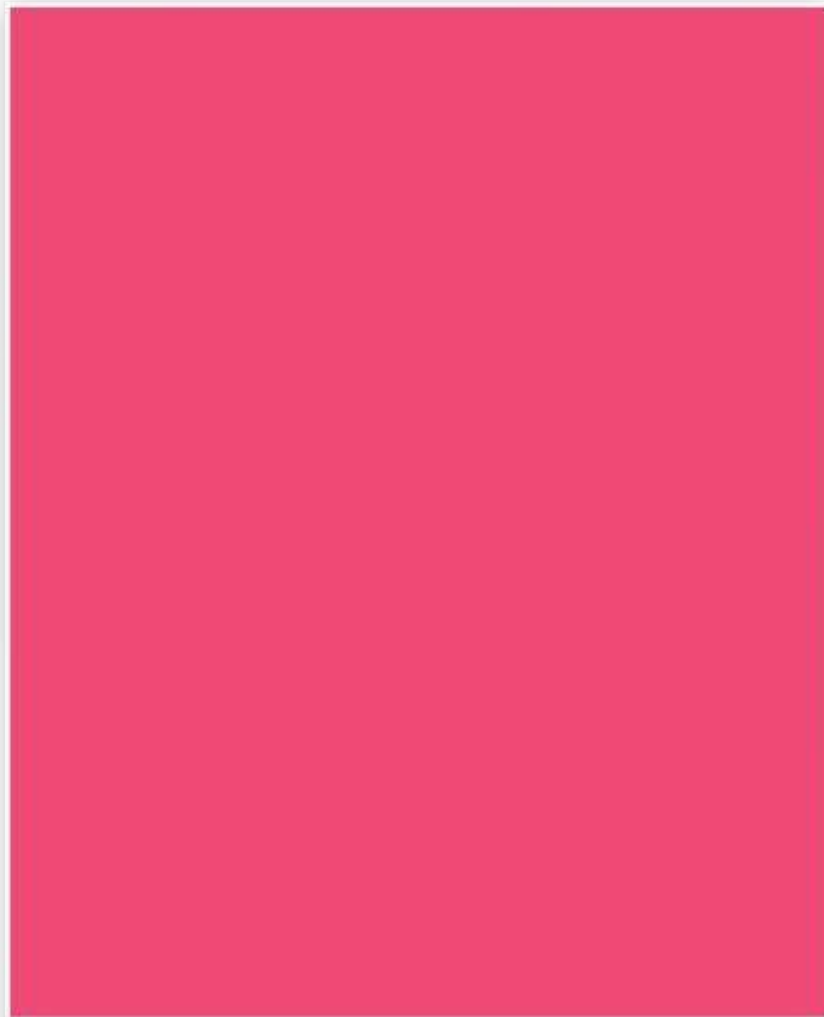
STUD FITTING



UV RANGE

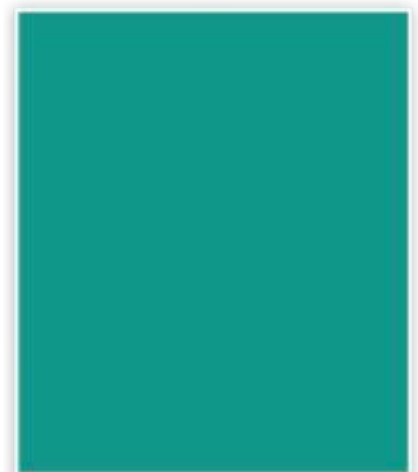


UV RANGE



HUTCH PINK

126



CARIBE

129

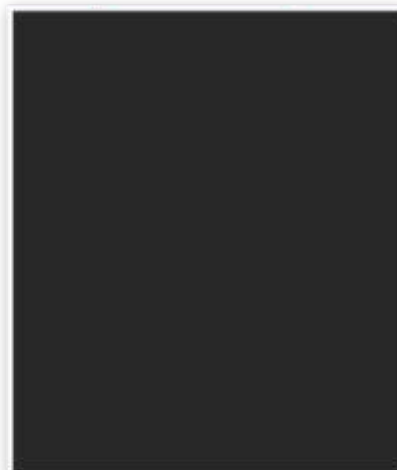


MINT GREEN

129



SLATE GREY 105



BLACK 106



CARDINAL RED 107

UV RANGE



STAR SPARKLE BLACK

SP 1106



SILVER GLITTER GT1122



VIOLET GLITTER GT1121

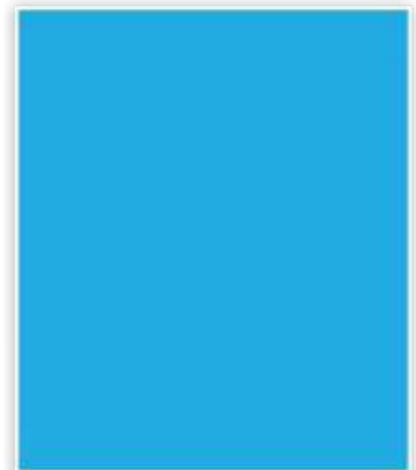


STAR SPARKLE CARDINAL RED SP1107



DARK VIOLET

1123



CELESTIAL BLUE

1125

UV RANGE



STONE MARBLE 3367



GOLD VENEER 3348



ELEVATED WOOD 3349



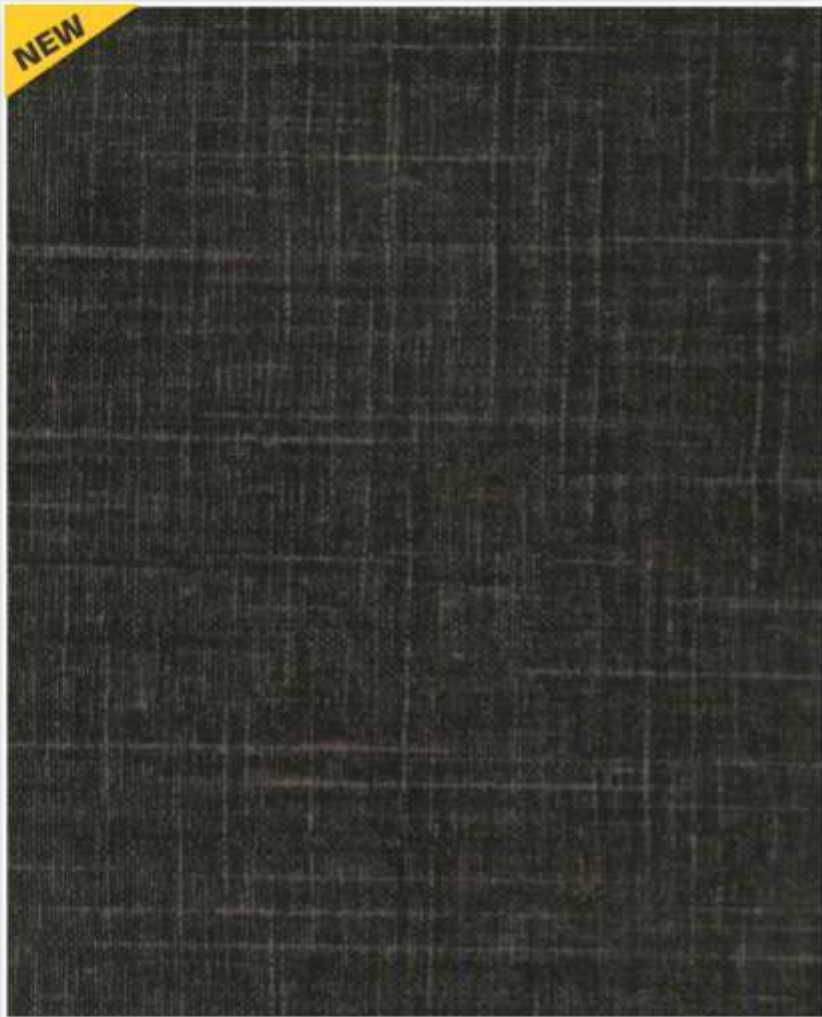
CHOCO MARBLE 3366



SAND CROSS LINE 3045

UV RANGE

NEW



LINEN BLACK 3360

NEW



LINEN WHITE 3359

NEW



GRANITE 3356

NEW



RUSTIC BROWN 3357

NEW



RUSTIC IVORY 3358

NEW



YELLOW GOLD MARBLE 3055

UV RANGE



ITALLIAN MARBLE 3354



GREY MARBLE 3353



GULMOHAR 3337



CRYSTAL BLACK 3323



BLACK CURRENT 3322

UV RANGE



MOLDAU ACACIA DARK 026



MOLDAU ACACIA LIGHT 025



LORRAINE WALNUT 007



CLASSIC PLANKED WALNUT 009



RED SAMOA 343



NOCE DI VINCI 017

UV RANGE



SMOKE ZEBBRANO 345



SANTOSE 339



HICKORY 344



SATIN WOOD 340



TULIP 342

UV RANGE



FLOWERY WENGE 002



NEW COUNTRY DARK 028



NEW COUNTRY LIGHT 013



HIGHLAND PINE 003



BRUSHED ALUMINUM 346



AFRICAN EBONY 338

UV RANGE



MAHOGANY 024



SAPELLI 015



IRISH CREAM 120



Essence

OF TESA UV COATED PANELS

9 LAYERS OF HIGH GLOSS UV LACQUER	The Action TESA Ultra Violet Coated Panels are coated with 9 Layers of UV Lacquer rendering an impervious and permanent high gloss surface.
EG EXTERIOR GRADE CORE	Exterior Grade Core Panel used for high water resistance making it ideal for applications in moisture prone areas
 HIGHLY SCRATCH RESISTANT	Highly Resistant to abrasion with a UV Hardened surface.
98% GLOSS LEVEL	Transparent UV Lacquer renders 98% High Gloss level that does not lose its sheen with the passage of time. Increased sharpness & depth of decor.
 E FRIENDLY	Environment Friendly Panelling Solution with 0.05 mg/L of Formaldehyde Emission, Zero VOC & has no Benzene or lead content.
 RESISTANT TO ACIDS & ALKALIES	Resistant to most acids, alkalies & stains.
HARD WOOD	Hard Wood used for motherboards
 EASY WORKABILITY	Easy workability. Can be cut with any saw having a TCD/PCD Tip @ 4500 rpm. Can be easily fixed as would conventional panels.



Corporate Office : G-11, Udyog Nagar, Main Rohtak Road, New Delhi-41
 Ph: 011-41120000 Fax : 011-25472907, E-mail : ho@actiontesa.com



www.actiontesa.com



<https://in.linkedin.com/in/action-tesa-67420ba8>



<http://www.facebook.com/theactiontesa>

Action Tesa Product Range : •Pre-Laminated & Plain Particle Board •Pre-Laminated & Plain MDF & HDHMR Board
 •HDF Laminated Flooring •Embossed HDF Board •UV Coated Board •High Gloss Acrylic Board



SOUTH INDIA / EAST UP & MP & CG / MAHARASTRA & PUNE / VIDARBH/ BIHAR & ORRISA / EAST ZONE -
 DELHI / GUJRAT & RAJASTHAN / J&K, HARYANA & HP/ PUNJAB / WEST UP & UK -

Girish cce2@actiontesa.com 011 - 41120098
 Deep cce3@actiontesa.com 011 - 41120018